

Supplementary Explanation of Output 3

24th July 2019

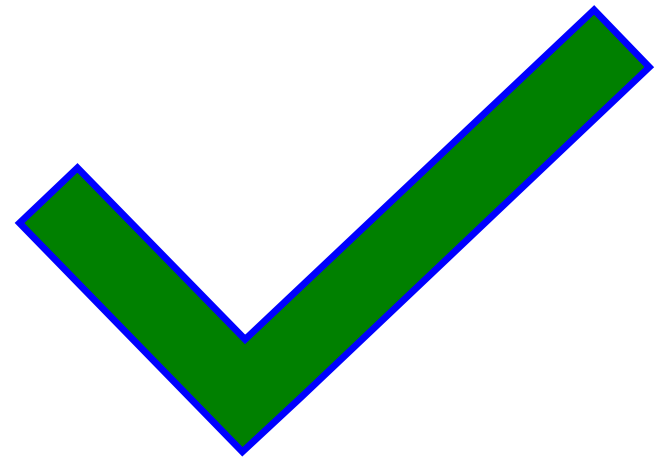
TAKA AKI KATO

(Project Coordinator / Community-based Forest Management)

Outline of Presentation

1. Concept of Pilot Activity
2. Pilot Activities defined in Project Design Matrix
3. Achievement of FY2018: Pilot Site Selection
4. Progress of FY2019 First half: Supporting activities for Pilot Activity Planning
5. Upcoming Activities of FY2019

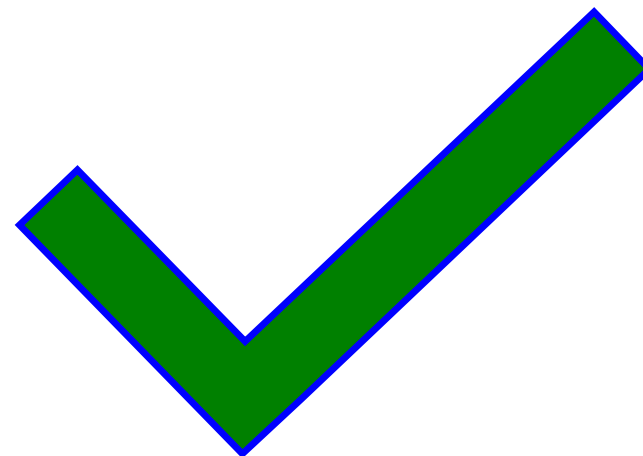
CONCEPT OF PILOT ACTIVITIES



Concept of Pilot Activities

- Aiming to establish the pilot sites of “Community-based Sustainable Forest Management” in Solomon Islands,
- “Community-based Sustainable Forest Management (CBSFM)” in customary land in SI should be:
 - ◆ **a landowners-led participatory approach**: *“CBSFM Activities shall be initiated, determined and implemented by the landowners”*
 - ◆ **tailored by the landowners** to fit their community and their forest, **through self-analysis on their socio-culture and economy as well as ecological status of their forest.**
 - ◆ **supported by government agency/ies with limited intervention (to minimize dependency)** and with minimum influence in their decision-making process
 - ◆ a holistic approach to **ensure forest activities deliver social, environmental and economic benefits** and **maintain and enhance forest functions now and in the future**

PILOT ACTIVITIES *DEFINED IN PROJECT DESIGN MATRIX*

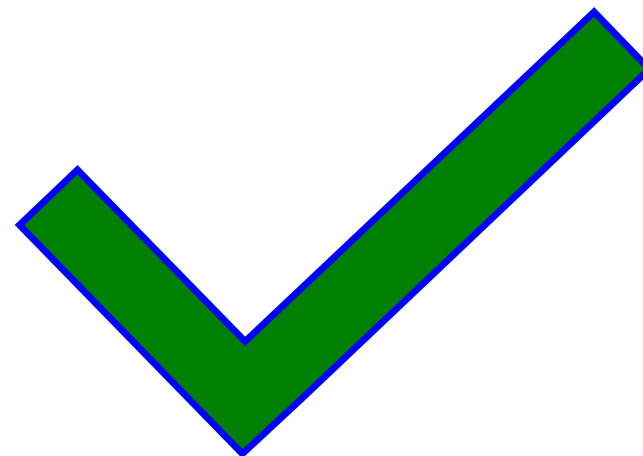


Pilot Activities defined in PDM

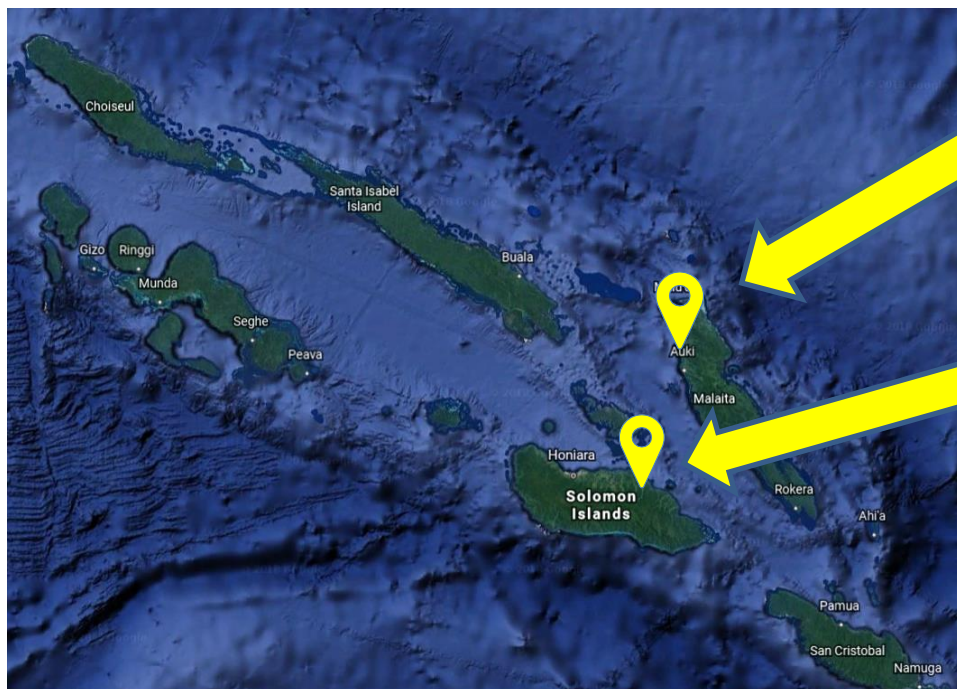
Output 3: Sustainable Forest Resource Management Pilot Activities, initiated by the Communities and supported/facilitated by MOFR, are implemented

Activity 3.1:	Select the Pilot Sites in accordance with the Pilot Sites selection criteria.
Activity 3.2:	Conduct community profiling in collaboration with the community people and socio-economic analysis in/around the Pilot Sites.
Activity 3.3:	Support and facilitate the Pilot Sites communities to develop Pilot Activities implementation plans.
Activity 3.4:	Support and facilitate the implementation of the plans by the communities.
Activity 3.5:	Monitor and evaluate the Pilot Activities from the viewpoint of their contribution to SFRM.
Activity 3.6:	Analyze and compile lessons learned from the Pilot Activities

ACHIEVEMENT OF FY2018



Achievement of FY2018: Pilot Site Selection



- ◆ FALAKE Community, West Malaita
- ◆ KOMUNIBOLI Community, Central East Guadalcanal

Pilot sites were selected according to the Selection Criteria discussed and agreed between MOFR & JICA

No	Selection Criteria for Pilot Site
1	Local People relying on forest resources
2	Local people who recognize forest degradation and are willing to improve their environment
3	Willingness of local people to participate in the pilot activities
4	Easy access
5	Commitment by provincial office as well as HQ of MOFR
6	Forest management to be improved by community-based activities
7	Significant deforestation / forest degradation
8	Secured land without conflict with land-right/land-use

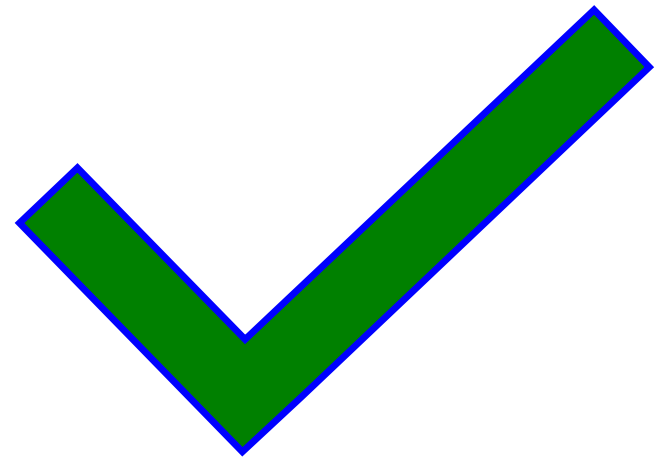
Kumoniboli Community



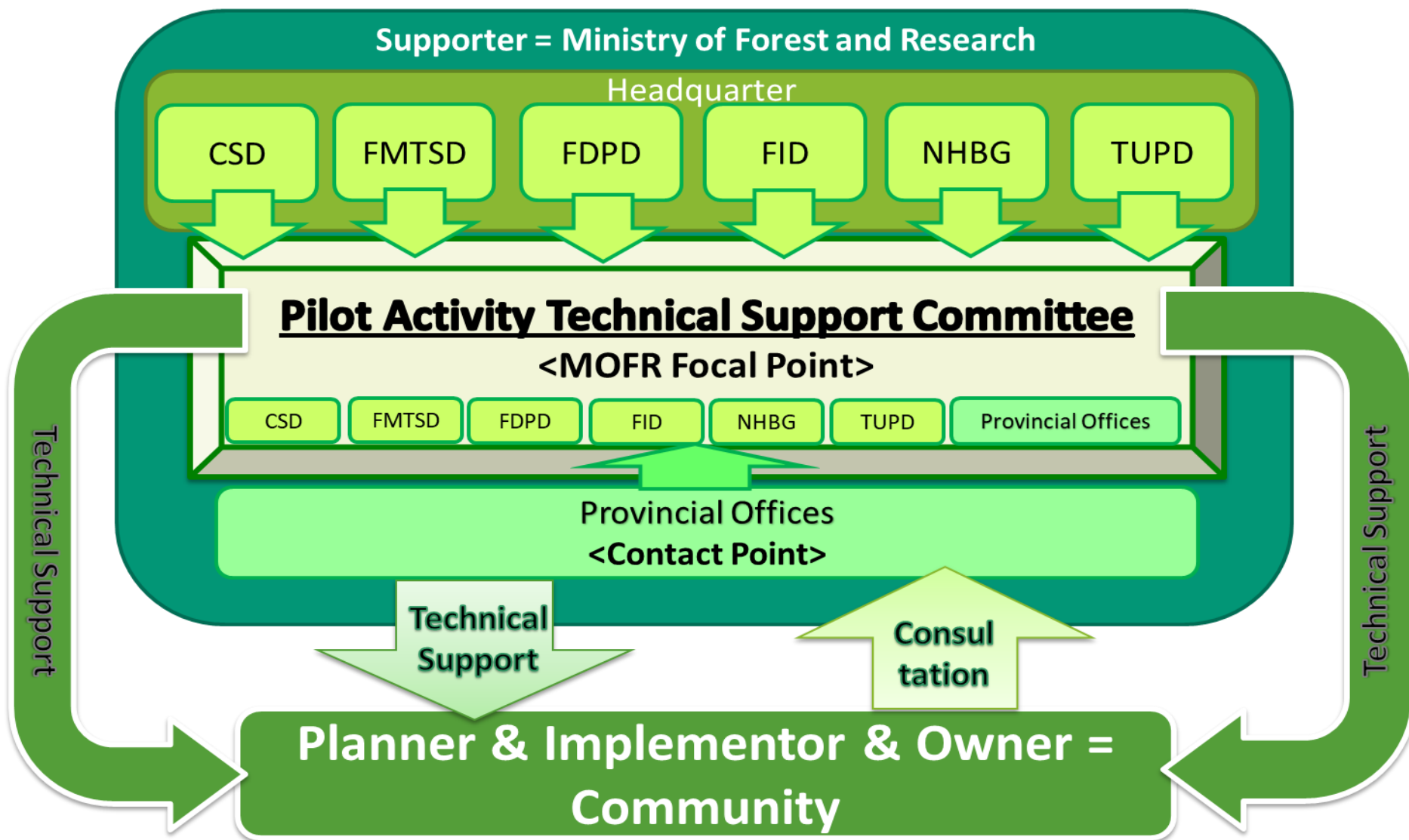
Falake Community



PROGRESS OF FY2019 FIRST HALF



1: Establishment of Pilot Activity Technical Support Committee inside MOFR



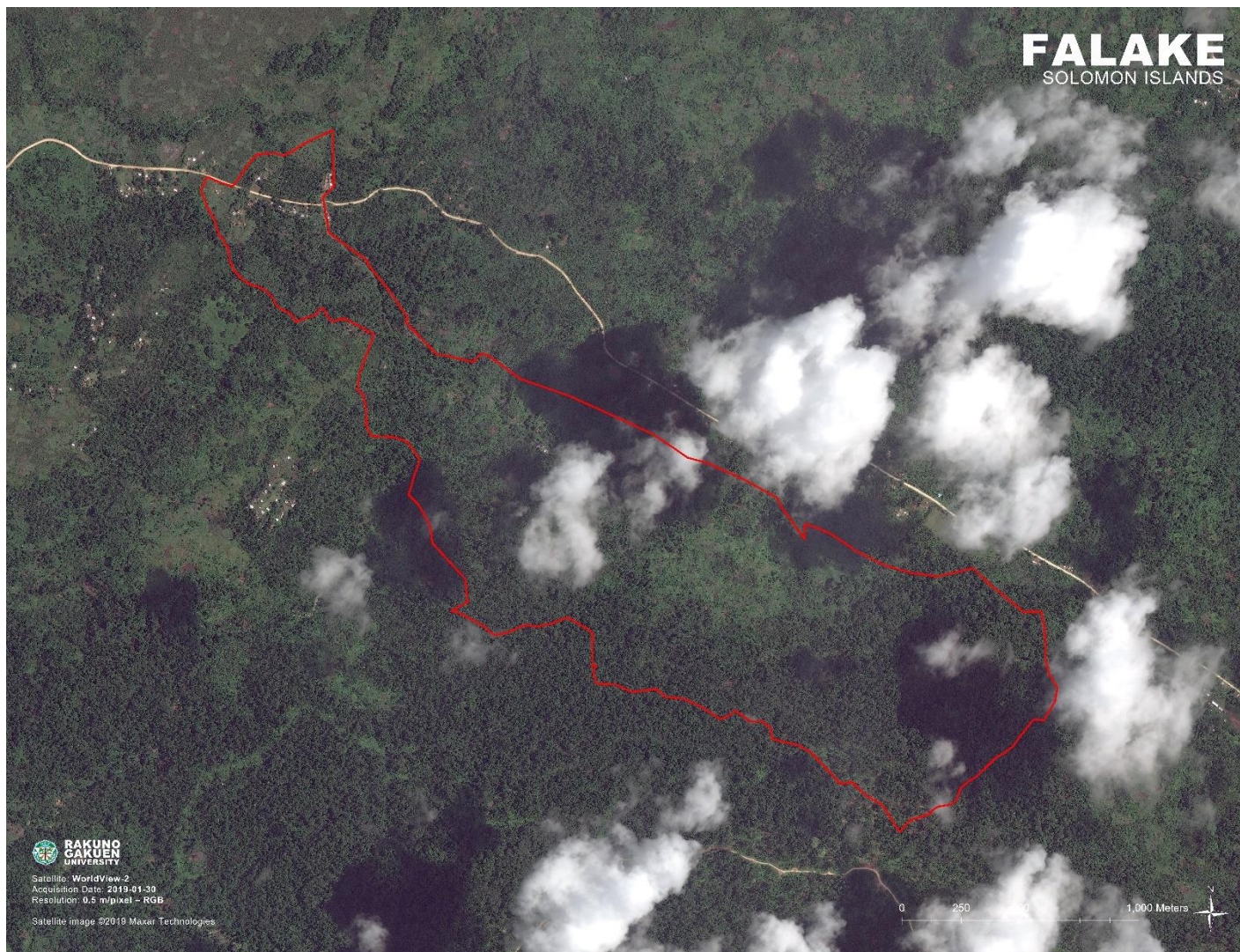
2: Boundary Survey for Demarcated Forest Land for Pilot Activities



2: Boundary Survey for Demarcated Forest Land for Pilot Activities



2: Boundary Survey for Demarcated Forest Land for Pilot Activities



3: Drone Survey

- Drone survey is a baseline survey on current forest condition, vegetation status and land use, utilizing Drone



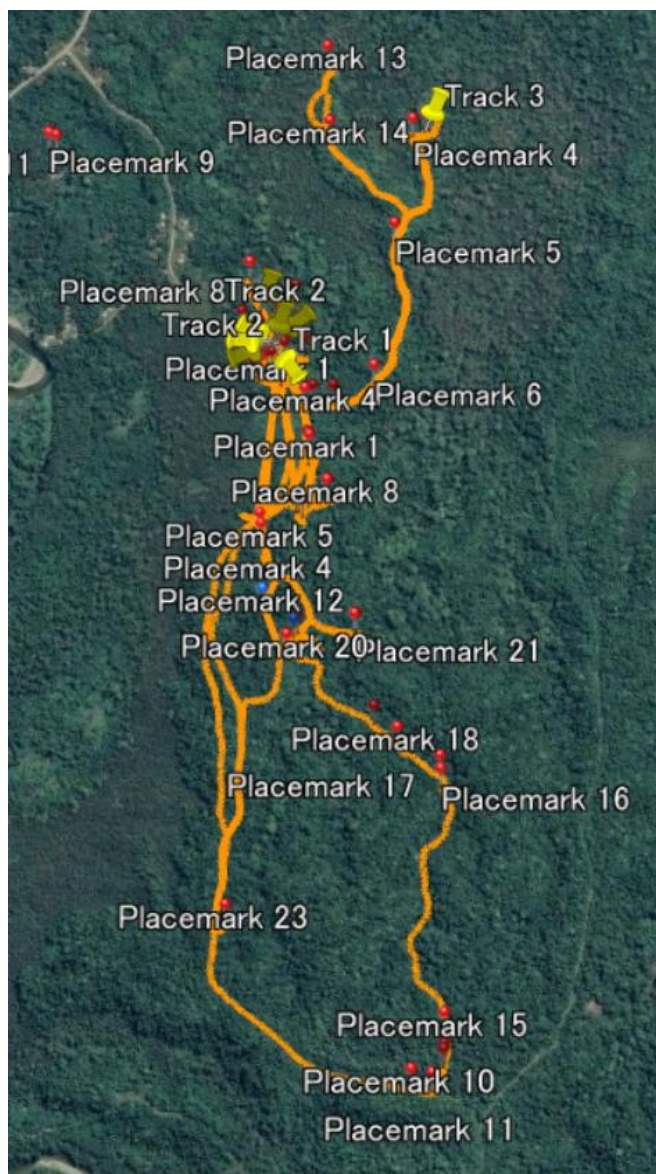
3: Drone Survey



4. GPS Transect Walk (Confirmation of Geographical Location of Resources and Taboo Sites)



4. GPS Transect Walk



← Resource Location Data of Komuniboli Community (incl. Taboo sites)

↓ Resource Location Data of Falake Community (incl. Taboo sites)

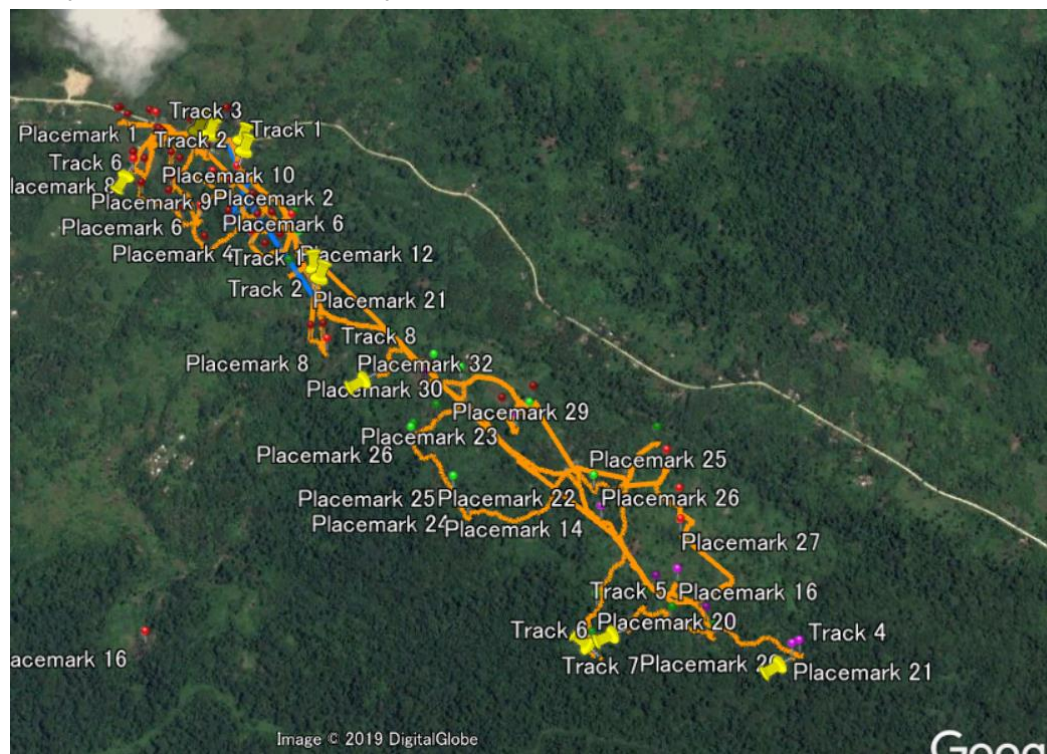


Image © 2019 DigitalGlobe

5. Training for Forest Inventory

- JICA-MOFR-GIZ Joint inventory program

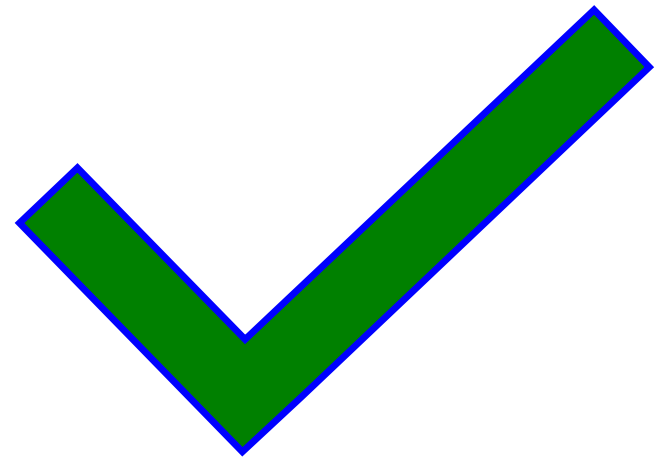


←GIZ Expert organized basic GIS training for Inventory planning for MOFR staff and SINU Lecturer and students



Permanent Secretary of Ministry of → Forestry and Research provided a special session for Soil Sampling to MOFR, SINU and MAL.

UPCOMING ACTIVITIES OF FY2019



GOAL OF FY2019:

Support the Pilot Site
Communities to
complete planning of
pilot activities

Upcoming Activities of FY2019

- Lineup upcoming activities for Pilot Activity Planning in FY2019
 1. Forest Inventory (NFI Piloting)
 2. Socio-economic Analysis
 3. Community Needs Assessment
 4. Market Research and Value-chain Analysis
 5. Participatory Land Use Planning
 6. Forest Management Planning and Alternative Livelihood Activity Planning

Pilot Activity Planning Schedule

Activity		Schedule																											
		Jun				Jul				Aug				Sep				Oct				Nov				Dec			
		1	2	3	4	1	2	3	4	1	2	3	4	1	2	3	4	1	2	3	4	1	2	3	4	1	2	3	4
Integrated Map Making	Planning and Preparation for GPS Transect Walk																												
	Participatory GPS Transect Walk @ Komuniboli																												
	Participatory GPS Transect Walk @ Falake																												
	GIS Data Analysis for Integrated Map Making																												
Drone Survey	Drone Survey @ Falake																												
Forest Inventory	Planning and Preparation for Forest Inventory																												
	Training for NFI Testing/Forest Inventory																												
	NFI Testing/Forest Inventory @ Komuniboli																												
	QA/QC @ Komuniboli																												
	Forest Inventory @ Falake																												
	QA/QC @ Falake																												
Socio-economic Analysis & Market Research	Preparation for Participatory Analysis for Integrated Map																												
	Designing & preparation for Socio-economic Analysis & Market Research																												
	Participatory Analysis for Integrated Map @ Komuniboli																												
	Socio-economic Survey & Market Research @ Komuniboli																												
	Participatory Analysis for Integrated Map @ Falake																												
	Socio-economic Survey & Market Research @ Falake																												
	Socio-economic Analysis and Value Chain Analysis																												
Land Use Planning	Designing and preparation for Land Use Planning																												
	Participatory Land Use Planning @ Komuniboli																												
	Participatory Land Use Planning @ Falake																												
Pilot Activity Planning	Designing and Preparation for Pilot Activity Planning																												
	Participatory Pilot Activity Planning @ Komuniboli																												
	Participatory Pilot Activity Planning @ Falake																												
	Finalisation of Pilot Activity Plans																												
JCC Approval	Joint Coordinating Committee (Project Steering Committee)'s approval on Pilot Activity Plans																												